



Test Report

No.: GZ1006064484/CHEM

Date: JUN 15, 2010

Page 1 of 6

KNOW HOW SAS
PIAZZA GAVAZZENI 6/E24060 BAGNATICA (BG) ITALY

This report is to supersede test report GZ1006064484/CHEM
Test report GZ1006064484/CHEM is to supersede test report GZ1005058445/CHEM.

The following sample(s) was/were submitted and identified on behalf of the applicant as soft pvc labels

SGS Job No. : SZ12548538
Supplier : KNOW HOW SAS
Date of Sample Received : MAY 28, 2010
Testing Period : MAY 28, 2010 TO JUN 02, 2010

Test Requested : Selected test (s) as requested by client.

Test Method : Please refer to next page(s).

Test Result(s) : Please refer to next page(s).

Signed for and on behalf of
SGS-CSTC Ltd.

Manson Yang
Approved Signatory

This document is issued by the Company subject to its General Conditions of Service printed overleaf, available on request or accessible at http://www.sgs.com/terms_and_conditions.htm and for electronic format documents, subject to Terms and Conditions for Electronic Documents at www.sgs.com/terms_e-document.htm. Attention is drawn to the limitation of liability, jurisdiction and jurisdiction issues defined therein. Any holder of this document is advised that information contained hereon reflects the Company's findings at the time of its intervention only and within the limits of Client's instructions, if any. The Company's sole responsibility is to its Client and this document does not exonerate parties to a transaction from exercising all their rights and obligations under the transaction documents. This document cannot be reproduced except in full, without prior written approval of the Company. Any unauthorized alteration, forgery or falsification of the content or appearance of this document is unlawful and offenders may be prosecuted to the fullest extent of the law. Unless otherwise stated the results shown in this test report refer only to the sample(s) tested.



198 Keshu Road, Sciencetech Park Guangzhou Economic & Technology Development District, Guangzhou, China 510663 t (86-20) 82155555 f (86-20) 82075113 www.cn.sgs.com
中国·广州·经济技术开发区科学城科珠路198号 邮编: 510663 t (86-20) 82155555 f (86-20) 82075113 e sgs.china@sgs.com

Member of the SGS Group (SGS SA)



Test Report

No.: GZ1006064484A/CHEM

Date: JUN 15, 2010

Page 2 of 6

Test Results:

Description for specimen 1 : White part w/ red plastic (mixed)

Elementary Analysis

| Test Item(s) | Unit | Test Method (Reference) | Result | MDL |
|---|-------|--------------------------|--------|-----|
| Cadmium (Cd) | mg/kg | IEC 62321: 2008, ICP-OES | N.D. | 2 |
| Lead (Pb) | mg/kg | IEC 62321: 2008, ICP-OES | N.D. | 2 |
| Mercury (Hg) | mg/kg | IEC 62321: 2008, ICP-OES | N.D. | 2 |
| Hexavalent Chromium (CrVI) by alkaline extraction | mg/kg | IEC 62321: 2008, UV-Vis | N.D. | 2 |

Note:

1. mg/kg = ppm
2. N.D. = Not Detected (< MDL)
3. MDL = Method Detection Limit

Flame Retardants

| Test Item(s) | Unit | Test Method (Reference) | Result | MDL |
|--------------------------|-------|-------------------------|--------|-----|
| Sum of PBBs | mg/kg | - | N.D. | - |
| Monobromobiphenyl | mg/kg | IEC 62321: 2008, GC-MS | N.D. | 5 |
| Dibromobiphenyl | mg/kg | IEC 62321: 2008, GC-MS | N.D. | 5 |
| Tribromobiphenyl | mg/kg | IEC 62321: 2008, GC-MS | N.D. | 5 |
| Tetrabromobiphenyl | mg/kg | IEC 62321: 2008, GC-MS | N.D. | 5 |
| Pentabromobiphenyl | mg/kg | IEC 62321: 2008, GC-MS | N.D. | 5 |
| Hexabromobiphenyl | mg/kg | IEC 62321: 2008, GC-MS | N.D. | 5 |
| Heptabromobiphenyl | mg/kg | IEC 62321: 2008, GC-MS | N.D. | 5 |
| Octabromobiphenyl | mg/kg | IEC 62321: 2008, GC-MS | N.D. | 5 |
| Nonabromobiphenyl | mg/kg | IEC 62321: 2008, GC-MS | N.D. | 5 |
| Decabromobiphenyl | mg/kg | IEC 62321: 2008, GC-MS | N.D. | 5 |
| Sum of PBDEs | mg/kg | - | N.D. | - |
| Monobromodiphenyl ether | mg/kg | IEC 62321: 2008, GC-MS | N.D. | 5 |
| Dibromodiphenyl ether | mg/kg | IEC 62321: 2008, GC-MS | N.D. | 5 |
| Tribromodiphenyl ether | mg/kg | IEC 62321: 2008, GC-MS | N.D. | 5 |
| Tetrabromodiphenyl ether | mg/kg | IEC 62321: 2008, GC-MS | N.D. | 5 |
| Pentabromodiphenyl ether | mg/kg | IEC 62321: 2008, GC-MS | N.D. | 5 |
| Hexabromodiphenyl ether | mg/kg | IEC 62321: 2008, GC-MS | N.D. | 5 |
| Heptabromodiphenyl ether | mg/kg | IEC 62321: 2008, GC-MS | N.D. | 5 |
| Octabromodiphenyl ether | mg/kg | IEC 62321: 2008, GC-MS | N.D. | 5 |
| Nonabromodiphenyl ether | mg/kg | IEC 62321: 2008, GC-MS | N.D. | 5 |
| Decabromodiphenyl ether | mg/kg | IEC 62321: 2008, GC-MS | N.D. | 5 |

Note:

1. mg/kg = ppm
2. N.D. = Not Detected (< MDL)
3. MDL = Method Detection Limit
4. "-" = Not regulated

This document is issued by the Company subject to its General Conditions of Service printed overleaf, available on request or accessible at http://www.sgs.com/terms_and_conditions.htm and for electronic format documents, subject to Terms and Conditions for Electronic Documents at www.sgs.com/terms_e-document.htm. Attention is drawn to the limitation of liability, remuneration and jurisdiction issues defined therein. Any holder of this document is advised that information contained hereon reflects the Company's findings at the time of its intervention only and within the limits of Client's instructions, if any. The Company's sole responsibility is to its Client and this document does not exonerate parties to a transaction from exercising all their rights and obligations under the transaction documents. This document cannot be reproduced except in full, without prior written approval of the Company. Any unauthorized alteration, forgery or falsification of the content or appearance of this document is unlawful and offenders may be prosecuted to the fullest extent of the law. Unless otherwise stated the results shown in this test report refer only to the sample(s) tested.



SGS Standards Technical Services Co., Ltd.
Guangzhou Chemical Laboratory

198 Keshu Road, Sciencetech Park Guangzhou Economic & Technology Development District, Guangzhou, China 510663 | (86-20) 82155555 | (86-20) 82075113 | www.cn.sgs.com
中国·广州·经济技术开发区科学城科珠路198号 邮编: 510663 | (86-20) 82155555 | (86-20) 82075113 | e sgs.china@sgs.com

Member of the SGS Group (SGS SA)



Test Report

No.: GZ1006064484A/CHEM

Date: JUN 15, 2010

Page 3 of 6

Phthalate(s)

| Test Item(s) | Unit | Test Method (Reference) | Result | MDL |
|------------------------------------|--------|-------------------------|--------|-------|
| Dimethyl Phthalate (DMP) | %(w/w) | EN14372: 2004, GC-MS | N.D. | 0.005 |
| Diethyl Phthalate (DEP) | %(w/w) | EN14372: 2004, GC-MS | N.D. | 0.005 |
| Dibutyl Phthalate (DBP) | %(w/w) | EN14372: 2004, GC-MS | N.D. | 0.003 |
| Benzylbutyl Phthalate (BBP) | %(w/w) | EN14372: 2004, GC-MS | N.D. | 0.003 |
| Di-(2-ethylhexyl) Phthalate (DEHP) | %(w/w) | EN14372: 2004, GC-MS | N.D. | 0.003 |
| Diisononyl Phthalate (DINP) | %(w/w) | EN14372: 2004, GC-MS | N.D. | 0.01 |
| Di-n-octyl Phthalate (DNOP) | %(w/w) | EN14372: 2004, GC-MS | N.D. | 0.003 |
| Diisodecyl Phthalate (DIDP) | %(w/w) | EN14372: 2004, GC-MS | N.D. | 0.01 |
| Diisobutyl Phthalate (DIBP) | %(w/w) | EN14372: 2004, GC-MS | N.D. | 0.005 |
| Dinonyl Phthalate (DNP) | %(w/w) | EN14372: 2004, GC-MS | N.D. | 0.005 |
| Diisooctyl Phthalate (DIOP) | %(w/w) | EN14372: 2004, GC-MS | N.D. | 0.01 |
| Dipropyl Phthalate (DPrP) | %(w/w) | EN14372: 2004, GC-MS | N.D. | 0.005 |
| Dicyclohexyl Phthalate (DCHP) | %(w/w) | EN14372: 2004, GC-MS | N.D. | 0.005 |
| Dipentyl Phthalate (DPP) | %(w/w) | EN14372: 2004, GC-MS | N.D. | 0.005 |
| Dibenzyl Phthalate (DBzP) | %(w/w) | EN14372: 2004, GC-MS | N.D. | 0.005 |
| Diphenyl Phthalate (DPhP) | %(w/w) | EN14372: 2004, GC-MS | N.D. | 0.005 |

Note :

1. mg/kg = ppm, 0.1% = 1000ppm
2. N.D. = Not detected (< MDL)
3. MDL= Method Detection Limit

For reference:

Entry 51/52 of Regulation (EC) No 552/2009 amending Annex XVII of REACH Regulation (EC) No 1907/2006 (previously restricted under Directive 2005/84/EC):

For DBP, BBP, DEHP

(1) Shall not be used as substances or in mixtures, in concentrations greater than 0,1% by weight of the plasticised material, in toys and childcare articles.

(2) Toys and childcare articles containing these phthalates in a concentration greater than 0,1% by weight of the plasticised material shall not be placed on the market.

For DINP, DNOP, DIDP

(1) Shall not be used as substances or in mixtures, in concentrations greater than 0,1% by weight of the plasticised material, in toys and childcare articles which can be placed in the mouth by children.

(2) Such toys and childcare articles containing these phthalates in a concentration greater than 0,1% by weight of the plasticised material shall not be placed on the market.

Remark: The sample(s) was/were analyzed on behalf of the applicant as mixing sample in one testing. The above result(s) was/were only given as the informality value and only for reference.

This document is issued by the Company subject to its General Conditions of Service printed overleaf, available on request or accessible at http://www.sgs.com/terms_and_conditions.htm and for electronic format documents, subject to Terms and Conditions for Electronic Documents at www.sgs.com/terms_e-document.htm. Attention is drawn to the limitation of liability, remuneration and jurisdiction issues defined therein. Any holder of this document is advised that information contained hereon reflects the Company's findings at the time of its intervention only and within the limits of Client's instructions, if any. The Company's sole responsibility is to its Client and this document does not exonerate parties to a transaction from exercising all their rights and obligations under the transaction documents. This document cannot be reproduced except in full, without prior written approval of the Company. Any unauthorized alteration, forgery or falsification of the content or appearance of this document is unlawful and offenders may be prosecuted to the fullest extent of the law. Unless otherwise stated the results shown in this test report refer only to the sample(s) tested.



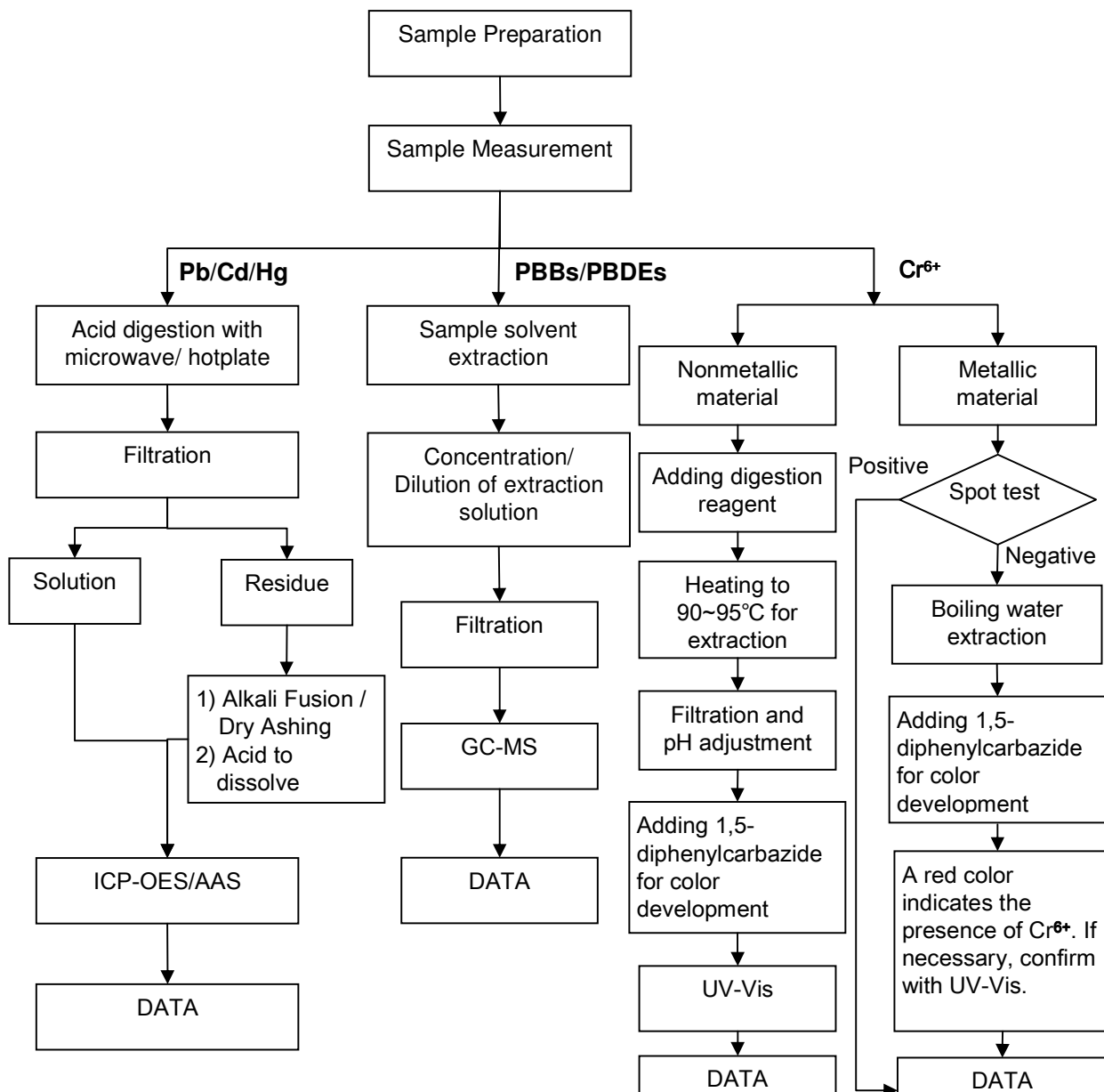
198 Keshu Road, Sciencetech Park Guangzhou Economic & Technology Development District, Guangzhou, China 510663 | (86-20) 82155555 | (86-20) 82075113 | www.cn.sgs.com
中国·广州·经济技术开发区科学城科珠路198号 邮编: 510663 | (86-20) 82155555 | (86-20) 82075113 | e sgs.china@sgs.com

Member of the SGS Group (SGS SA)

ATTACHMENTS

RoHS Testing Flow Chart

- 1) Name of the person who made testing: Bella Wang / Cutey Yu / Ross Zhan
- 2) Name of the person in charge of testing: Adams Yu / Ryan Yang
- 3) These samples were dissolved totally by pre-conditioning method according to below flow chart (Cr6+ and PBBs/PBDEs test method excluded).

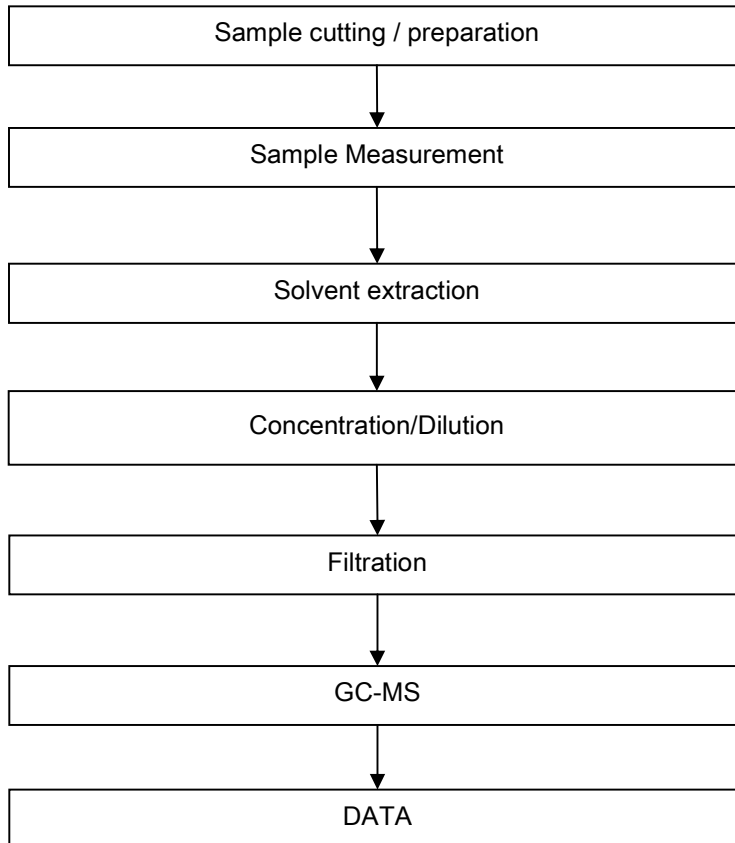


This document is issued by the Company subject to its General Conditions of Service printed overleaf, available on request or accessible at http://www.sgs.com/terms_and_conditions.htm and for electronic format documents, subject to Terms and Conditions for Electronic Documents at www.sgs.com/terms_e-document.htm. Attention is drawn to the limitation of liability, indemnification and jurisdiction issues defined therein. Any holder of this document is advised that information contained hereon reflects the Company's findings at the time of its intervention only and within the limits of Client's instructions, if any. The Company's sole responsibility is to its Client and this document does not exonerate parties to a transaction from exercising all their rights and obligations under the transaction documents. This document cannot be reproduced except in full, without prior written approval of the Company. Any unauthorized alteration, forgery or falsification of the content or appearance of this document is unlawful and offenders may be prosecuted to the fullest extent of the law. Unless otherwise stated the results shown in this test report refer only to the sample(s) tested.

ATTACHMENTS

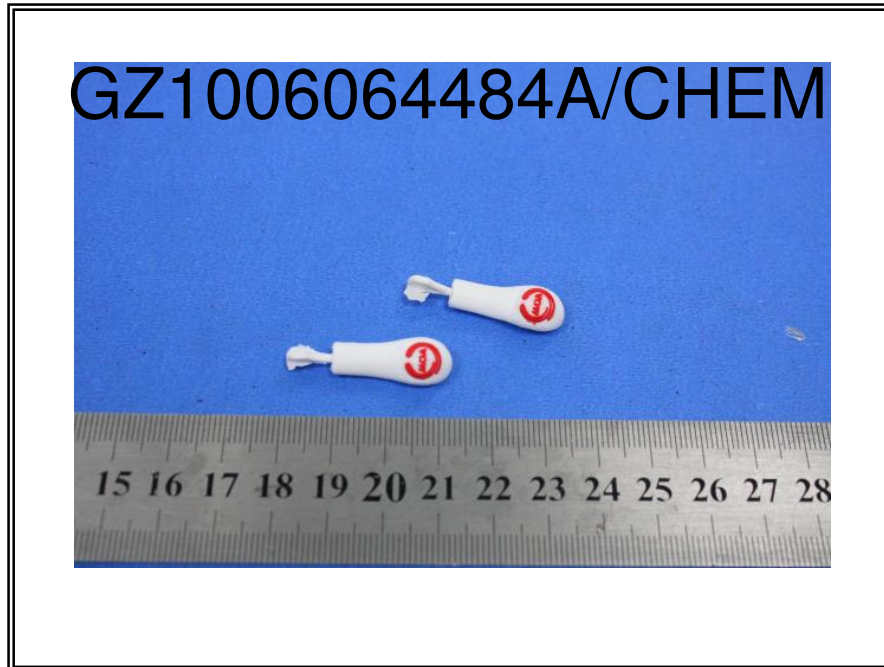
Phthalates Testing Flow Chart

- 1) Name of the person who made testing: Tina Zhao
- 2) Name of the person in charge of testing: Ryan Yang



This document is issued by the Company subject to its General Conditions of Service printed overleaf, available on request or accessible at http://www.sgs.com/terms_and_conditions.htm and for electronic format documents, subject to Terms and Conditions for Electronic Documents at www.sgs.com/terms_e-document.htm. Attention is drawn to the limitation of liability, jurisdiction and jurisdiction issues defined therein. Any holder of this document is advised that information contained hereon reflects the Company's findings at the time of its intervention only and within the limits of Client's instructions, if any. The Company's sole responsibility is to its Client and this document does not exonerate parties to a transaction from exercising all their rights and obligations under the transaction documents. This document cannot be reproduced except in full, without prior written approval of the Company. Any unauthorized alteration, forgery or falsification of the content or appearance of this document is unlawful and offenders may be prosecuted to the fullest extent of the law. Unless otherwise stated the results shown in this test report refer only to the sample(s) tested.

Sample photo :



SGS authenticate the photo on original report only

*** End of Report ***

This document is issued by the Company subject to its General Conditions of Service printed overleaf, available on request or accessible at http://www.sgs.com/terms_and_conditions.htm and for electronic format documents, subject to Terms and Conditions for Electronic Documents at www.sgs.com/terms_e-document.htm. Attention is drawn to the limitation of liability, jurisdiction and jurisdiction issues defined therein. Any holder of this document is advised that information contained hereon reflects the Company's findings at the time of its intervention only and within the limits of Client's instructions, if any. The Company's sole responsibility is to its Client and this document does not exonerate parties to a transaction from exercising all their rights and obligations under the transaction documents. This document cannot be reproduced except in full, without prior written approval of the Company. Any unauthorized alteration, forgery or falsification of the content or appearance of this document is unlawful and offenders may be prosecuted to the fullest extent of the law. Unless otherwise stated the results shown in this test report refer only to the sample(s) tested.

